

# Edwards PASCAL Transcatheter Valve Repair System CLASP 12-Month Multicenter Study Results<sup>1</sup>

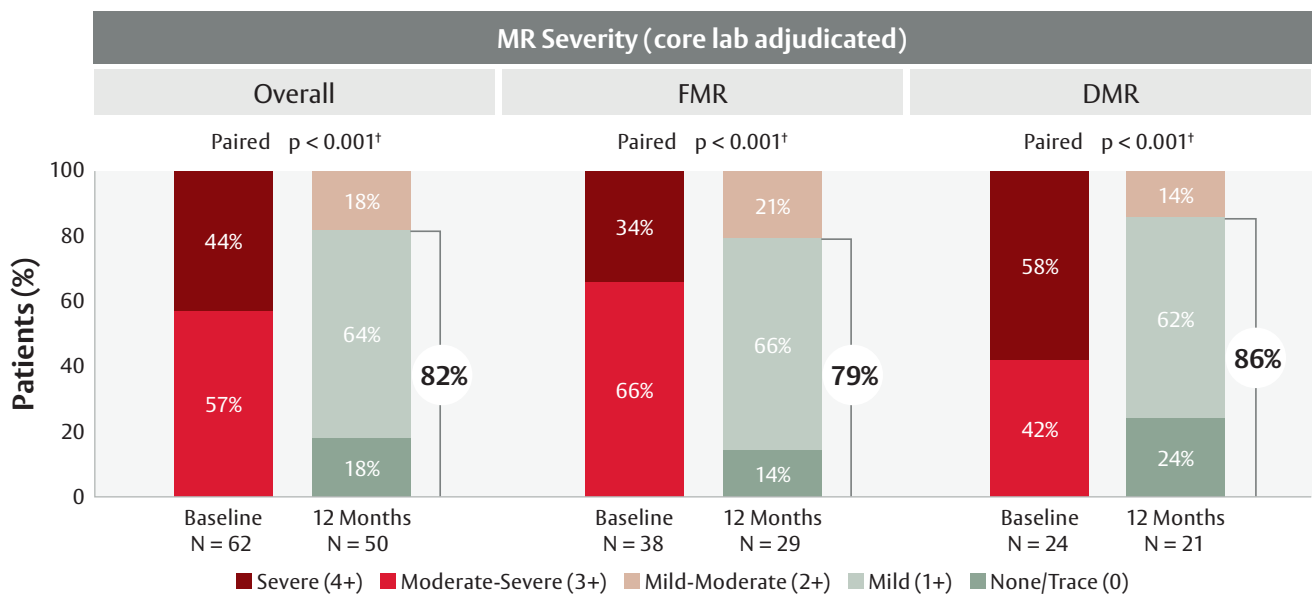
**A Therapy Designed for Effective MR Reduction**  
Clinically and statistically significant improvements at 12 months



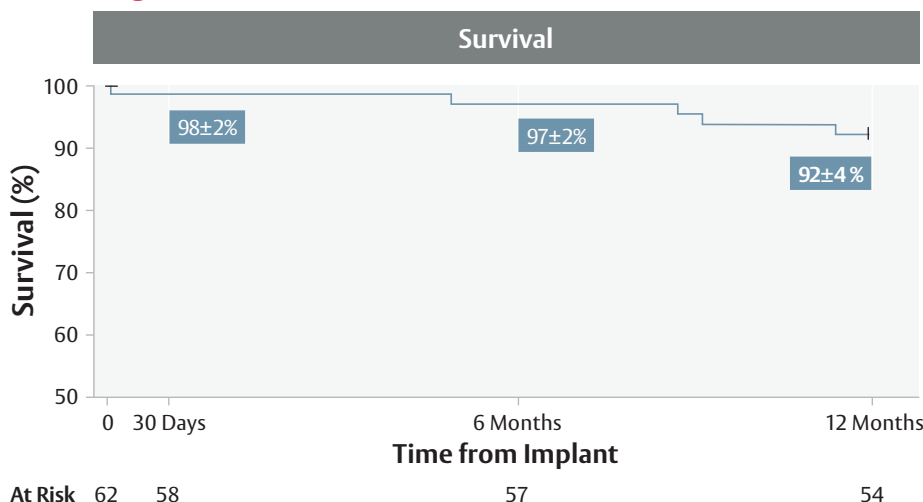
## Study design & baseline parameters<sup>1</sup>

Study Design: Multicenter, multinational, prospective, single-arm study	
Total patients: 109	FMR: 67%   DMR: 33%
NYHA Class III/IV: 57.4%	MR severity $\geq 3+$ : 100%
Mean age: 75.5 years	PISA EROA: $0.38 \pm 0.16 \text{ cm}^2$
Regurgitant volume: $57.2 \pm 20.6 \text{ ml}$	Mean vena contracta width, A-P: $6.3 \pm 1.4 \text{ mm}$

## Significant MR reduction: 82% of patients with MR 0-1+ at 1 year



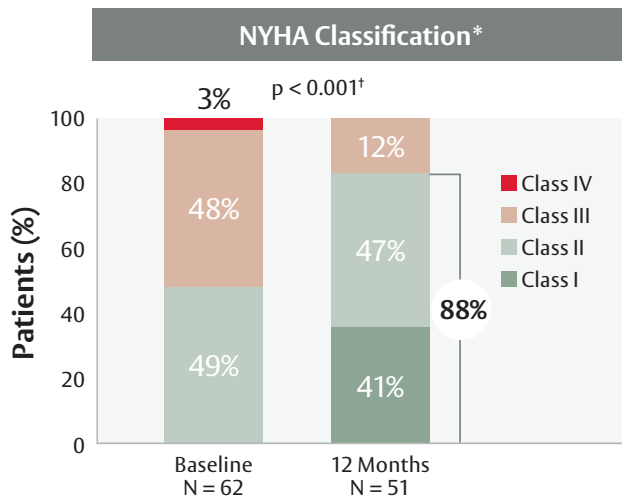
## High Survival Rate at 12 months



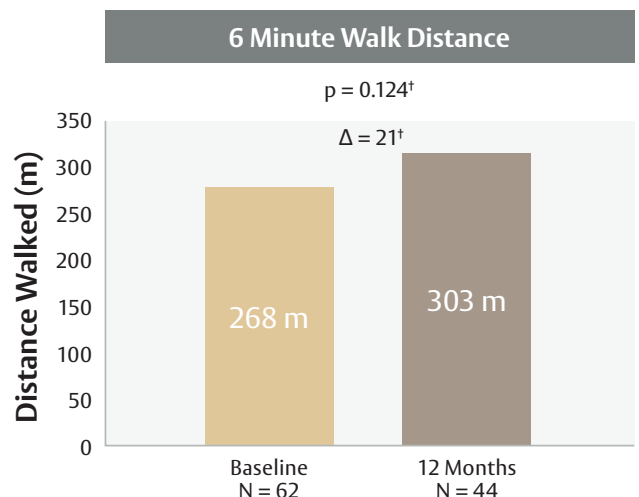
### Procedural characteristics

Successful implant rate: 95% (104)	Procedure time (mean, skin to skin): 128.2 ± 59.6 min
Mean number of devices implanted: 1.4	Length of hospital stay: 2.4 ± 3.3

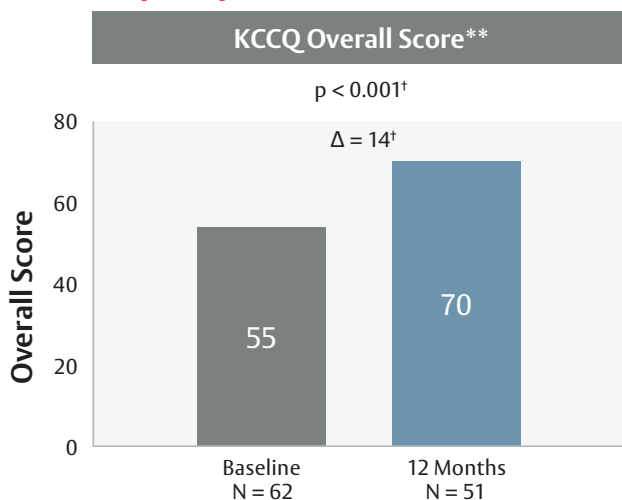
### Significant functional improvements in NYHA Class



### Meaningful increase in exercise capacity



### Significant improvement in quality of life



### Conclusions:

The PASCAL transcatheter valve repair system demonstrated a low complication rate and high survival, with robust sustained MR reduction accompanied by significant improvements in functional status and quality of life at one year.



\* New York Heart Association, Functional Classification (NYHA)

\*\* Kansas City Cardiomyopathy Questionnaire (KCCQ)

† P-values calculated using Wilcoxon signed rank test or paired t-test; MR Severity paired analysis compares baseline vs. 1 year (Overall n=50; FMR n=29; DMR n=21). NYHA paired analysis compares baseline vs. 1 year (n=51); KCCQ paired analysis compares baseline vs 1 year (n=51); 6MWD paired analysis compares baseline vs 1 year (n=44). Δ is the difference between baseline and corresponding timepoints.

<sup>1</sup> Webb JG, Lim DS et al. One-Year Outcomes for Transcatheter Repair in Patients with Mitral Regurgitation from the CLASP Study. *JACC Card. Interventions*. 2020 Jun 25. Published DOI:10.1016/j.jcin.2020.06.019

For professional use. For a listing of indications, contraindications, precautions, warnings, and potential adverse events, please refer to the Instructions for Use (consult [eifu.edwards.com](http://eifu.edwards.com) where applicable).

Edwards devices placed on the European market meeting the essential requirements referred to in Article 3 of the Medical Device Directive 93/42/EEC bear the CE marking of conformity.

Edwards, Edwards Lifesciences, the stylized E logo, CLASP, and PASCAL are trademarks or service marks of Edwards Lifesciences Corporation. All other trademarks are the property of their respective owners.

© 2020 Edwards Lifesciences Corporation. All rights reserved. PP--EU-0280 v2.0

Edwards Lifesciences • Route de l'Etraz 70, 1260 Nyon, Switzerland • [edwards.com](http://edwards.com)